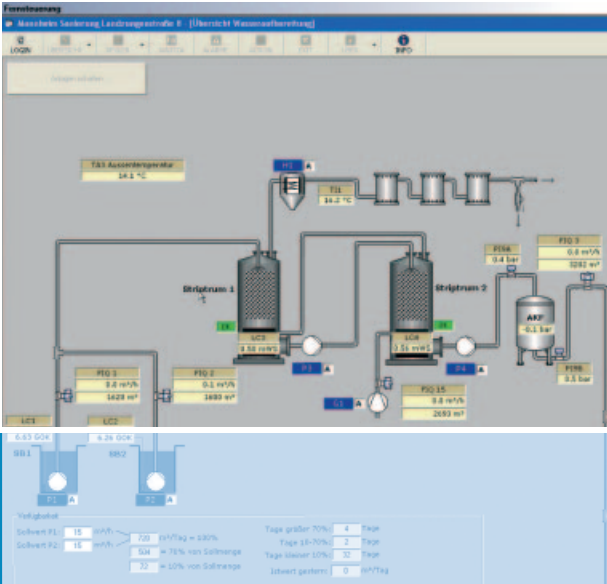


dewatering
well drilling
enviro-engineering



Engineering



Engineering

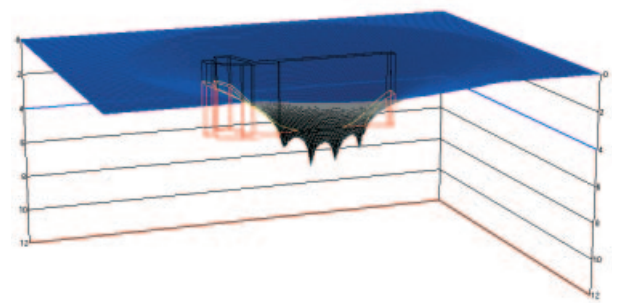
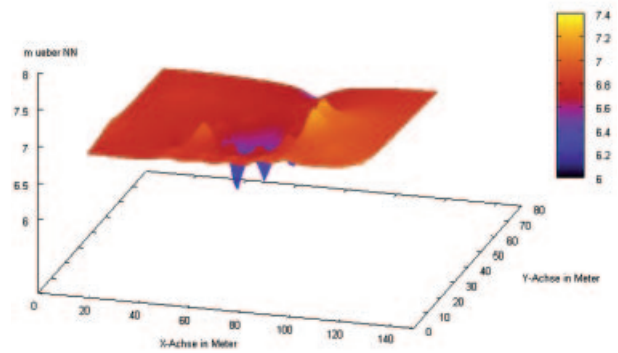
In addition to all of our other services we also provide specialised engineering services in the areas of underground water modeling and automatic control engineering.

We support you with groundwater engineering during the approval phase of your project which allows you to complete construction in a timely manner. The groundwater modeling is carried out with the latest software available.

Furthermore, we also have the capability to provide you with a fully automated control system for the dewatering system. This minimises the man hours required to monitor the underground water drainage system and increases the safety. The use of the following components also leads to an increase in operating efficiency and compatibility with the environment:

- Fully automated system control
- Continuously adjustable speed control of all drives
- Online remote operation monitoring
- Recording of all relevant data, online documentation and transmission
- Emergency alarm transmission per telephone, SMS, E-mail

We would be happy to consult with you on an individual basis.



info@hw-dewatering.com

www.hw-dewatering.com

Hölscher Wasserbau GmbH

International Division
Haren, Germany

Branch offices in: Austria
Bulgaria
Denmark
Great Britain
Latvia
Netherlands
Poland
Romania